



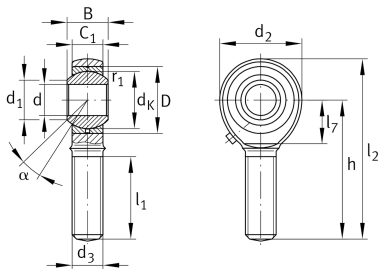
GAKL16-PB

Rod end

Schaeffler ID:
0066333660000

Rod end with external thread, left hand thread, requiring maintenance, sliding contact surface: steel/bronze, DIN ISO 12240-4, dimension series K, type M, open design

Technical information



Main Dimensions & Performance Data

d	16 mm	Bore diameter bearing
D	32 mm	Outside diameter bearing
B	21 mm	Width inner ring
C_r	21,400 N	Basic dynamic load rating, radial
C_{0r}	45,300 N	Basic static load rating, radial
	208 g	Weight

Dimensions

d_K	28.575 mm	Ball diameter
d_1	19.3 mm	Outer flange diameter inner ring
d_2	42 mm	Outer eye diameter
d_3	M16	Thread size
h	66 mm	Shank Length External thread rod
C_1	15 mm	Width of the rod end
α	15 °	Tilt angle
l_1	37 mm	Shank Length External thread head
l_2	87 mm	Total length external thread head
l_7	23 mm	Distance drilling with/shaft start
G_r	0 - 0,035 mm	Radial Clearance
d_{OT}	0.018 mm	Bore diameter bearing, upper tolerance
d_{UT}	0 mm	Bore diameter bearing, lower tolerance
d_T	H7 mm	Bore diameter bearing, tolerance
B_{OT}	0 mm	Width inner ring, upper tolerance
B_{UT}	-0.12 mm	Width inner ring, lower tolerance

Mounting dimensions

r_{1smin}	0.3 mm	Edge Spacing
-------------	--------	--------------

Temperature range

T _{min}	-60 °C	Operating temperature min.
T _{max}	250 °C	Operating temperature max.